

# CMHC Housing Programs & Funding in NWT

- **Benoit Lidenot** from the Financial Solutions Indigenous - North team
- **Terri Gibbons** from the Client Solutions Indigenous Housing – North team

January 2025



# Main Activities

*U c bcjgcpnspk\_lb\_rc\_lb nsppsc nspqp\_rcewrfms ef rfpc `sqg cqq\_argggq*



Deliver and Share  
Housing Knowledge  
and Expertise



Deliver Housing  
Programs



Offer Housing  
Finance Solutions



**In 2017, the federal government launches Canada's first *National Housing Strategy*.**

**The National Housing Strategy (NHS) is Canada's  
10-year, \$82+ billion  
plan to give more people in Canada a place to call home.**

The investments and programs within the NHS recognize that housing is essential to preserve the dignity and well-being of people in Canada.

The successful delivery of the NHS supports our mandate and is a significant contributor towards achieving our strategic results and outcomes.

## Highlights from Budget 2024 Initiatives

- Canada Rental Protection Fund
- Child Care Expansion Loan Program
- Co-operative Housing Development Program (CHDP)
- Building Homes on Public Lands
- Housing Design Catalogue
- Enhancing the Affordable Housing Fund and Affordable Construction Loan Program

# CMHC in NWT

- Dedicated Specialists in Clients Solutions, Financial Solutions, Government Relations and Municipal Relations build strong relationships with NWT partners to identify housing solutions tailored to their unique needs.
- Specialists act as “navigators” to help housing providers find the right funding and financing options to support their projects.
- Applications from Indigenous and Northern partners are prioritized and reviewed by a dedicated finance team.
- CMHC has a dedicated Indigenous & Northern Housing Policy Development team to support northern and Indigenous considerations in program development and delivery.



# Who we work with in Northwest Territories

- First Nations
- Inuit (Indigenous Governments)
- Indigenous Organizations
- Housing Co-Ops
- Indigenous/Non-Profit Organizations servicing Indigenous populations
- Territorial and Municipal Governments
- Indigenous Development Corporations
- Indigenous Non-Government Organizations
- Representational Organizations
- Non-Profit Organizations
- Private Developers

# CMHC Programs



## Affordable Housing Fund

The Affordable Housing Fund provides capital to **partnered organizations\*** for new affordable housing and the repair and renewal of existing affordable and community housing. Funds are provided as low-interest and/or forgivable loans and contributions.

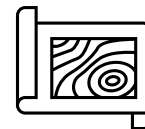
- New Construction: Community Housing Sub-Stream
- New Construction: Rapid Housing Sub-Stream
- Repair and Renewal



## Canada Greener Affordable Housing (CGAH)

Canada Greener Affordable Housing helps affordable housing providers complete deep energy retrofits on existing multi-unit residential buildings.

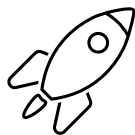
- Pre-Retrofit Funding
- Retrofit Funding



## Federal Lands Initiative

The Federal Land Initiative helps improve use of federal lands by fostering collaboration among government agencies, local communities and private entities. Its objectives include promoting sustainable land use, enhancing public access and recreation, supporting economic development and adopting efficient land management practices. The initiative focuses on balancing environmental conservation with opportunities for economic growth and community benefits.

# CMHC Programs



## Housing Accelerator Fund

Removing barriers to encourage local initiatives to build more homes, faster. The Fund is helping to boost housing supply, while supporting affordable, diverse and climate-resilient communities.

- Large/Urban
- Small/Rural/North/Indigenous



## Housing Internship for Indigenous Youth

Housing Internship for Indigenous Youth is a win-win for everyone. Interns receive training, you get additional support.

Internship positions include:

- housing administration
- maintenance
- construction / renovation
- tenant relations
- trades apprenticeships



## Indigenous Shelter and Transitional Housing Initiative

\$724.1M to expand supports for Indigenous women, children, and 2SLGBTQIA+ people escaping gender-based violence.

Please note: This application window is now closed



# CMHC Programs



## Rapid Housing Initiative

Capital contributions for the rapid construction of new housing and/or acquisition of existing buildings for rehabilitation or conversion to permanent affordable housing.

### Projects Stream -

CMHC is currently reviewing applications submitted to the Projects Stream. Successful and unsuccessful applicants will be notified after the end of the review and prioritization period.

### Cities Stream -

Pre-determined municipalities have submitted a number of projects for review to ensure they meet or exceed the minimum requirements for RHI. Projects proposed under the Cities Stream are being prioritized by the municipalities.

Please note: This application window is now closed



## Seed Funding

Financial assistance to help community housing providers with the costs of early development activities related to the predevelopment costs of building a new affordable housing project or renovating an existing affordable housing project.

Due to overwhelming demand, the Seed Funding Contribution budget for 2024 has been fully allocated.

Applications for interest-free loans will continue to be accepted.

# Your Housing Specialists

## Tips on how to work with your Specialist:

- ✓ Talk to us early and often! We try to do what makes sense. E.g., Flexibilities, exceptions, and new programs coming down the pipeline are always considered where it makes sense
- ✓ Start with your vision, goals, and what your community needs – don't get lost in the program details (there are a lot). Specialists are here to help guide applicants on the funding most appropriate for them.
- ✓ Our programs and funding are always evolving to make sure Northern clients can access support from CMHC (funding, capacity development, resources etc). The more we know the more we can help find a solution.
- ✓ Northern needs are unique, and we approach relationships that way – we work hand-in-hand with applicants from before applications are submitted all the way through to project completion.



# CMHC Impact Across NWT

## At a Glance...

Committed  
\$256M+ in  
funding



Committed  
2893  
beds/units



Funded 14  
Youth Interns  
(\$243,670)



Committed \$256M+ in funding



\$1M

\$80M+

Committed 2893 beds/units



20

500+

Funded 14 Youth Interns



1

3

\*expect small discrepancies between map visual and actual impact

## Overview of NTW Funding Activities & Units Created

? dmpb\_`jc F ms qg e  
Ds l b

Committed CMHC Funding

**\$116,864,939.64**

Sl gq- @bqApç\_rcb

**511**

Canada Greener  
Affordable Housing  
Fund

Committed CMHC Funding

**\$18,647,642.00**

Units/ Beds Created

**546**

Dcbcp\_j J\_l bq  
G gg rg c

Ank k grcb AKF A Dsl bg e

**\$2,939,999.00**

Sl gq- @bqApç\_rcb

**36**



## Overview of NTW Funding Activities & Units Created

F ms qd e ? aacjcp\_rmp  
Ds1 b

Committed CMHC Funding

**\$14,544,790.70**

S1 gq- @bqApç\_rcb

-

Housing Internship for  
Indigenous Youth

Committed CMHC Funding

**\$243,670.96**

Interns Hired

**14**

G bgecl ms q Qf cjrçp \$  
Rp\_1 qgrnd \_j F ms qd e

Ank k grçb AKF A Ds1 bg e

**\$38,345,764.78**

S1 gq- @bqApç\_rcb

**180**



## Overview of NTW Funding Activities & Units Created

P\_ngh F ms qd e  
G g g r g c

Ank k grcb AKF A D l b g e

**\$56,220,248.43**

S l g q - @ b q A p c \_ r c b

**205**

Seed Funding

Committed CMHC Funding

**\$1,777,560.33**

Units/ Beds Created

**1103**



# AVENS Pavilion - The Affordable Housing Fund

\$40M in funding

102 Units

Indigenous  
Seniors

Shared services and supports

**AVENS Pavilion** is a multi-family apartment complex for senior residential rental with supportive living and assisted living services available.

Through CMHC funding this project was possible, supporting the community housing sector, and providing affordable housing with a continued care model for the senior residents.

**Affordability:** All units will be below MRR, and affordability will be held in perpetuity

**Facilities:** Featuring shared services such as income support, social workers, laundry services etc., to support residents.





## AVENS Pavilion: Integrating community in housing

Sewing studio  
for residents,  
equipped with  
state-of-the-art  
equipment



One of the largest and most  
sophisticated kitchens in NTW



One unit, featuring  
blackout curtains  
to keep out  
the summer's  
midnight sun.

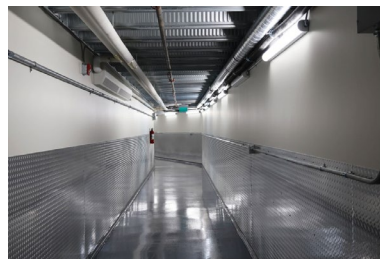


Modern and  
accessible spa  
room for  
Resident use

Already a resident  
favorite – the  
game room!



A tour of the  
soon-to-be  
theater room  
for residents  
to enjoy



First of its kind in NWT  
– an underground  
tunnel to help shuttle  
food and laundry  
services between other  
AVENS accommodations



# Lynn's Safe Place for Women – RHI & AHF

\$17.5M in funding

21 Units

Transitional & supportive housing

Women  
fleeing  
violence

Also referred to as **Hoti Etsanda Kò** (Healthy Living Place) in Wìlìideh Yatìi, Lynn's Place has been welcoming women and their children since 2014.

There are units for single women (including those that are wheelchair accessible), two-bedroom units and three-bedroom units. Following CMHC guidelines, all units are affordable.

**Lynn's Place is for women who need safe housing after leaving a violent relationship or who are ready to find stability in a safe environment.**



YWCA NWT's Alayna Ward, left, and Hawa Dumbuya-Sesay

## Lynn's Place: Combatting Homelessness in NWT



A ground-floor gathering place for residents

An impressive ground-floor storage room lines with fridges and a giant chest freezer which gets filled at a discount by a local charity.



View from one of the buildings newer units

Vibrant touches of colour throughout the corridors and units make the space more inviting especially for children



Games and playing area for residents

One room is named the Helen Tobie Room, for the late Dettah Elder (pictured) who was known for her hospitality, opening up her home and helping people to learn traditional ways of life.



# Meet Your CMHC Team

Bright Lubansa

Benoit Liodenot

Shawn Storry

Mathieu Manton

Carolyn Gisborne

Kimberly Jones

Corrine Codina



K\_f qgç Rf\_l i Wms

O s c q r g n l q =

Want to connect with the INHS  
North team?



[ABINHS-SLAN@cmhc-schl.gc.ca](mailto:ABINHS-SLAN@cmhc-schl.gc.ca)